



Seas, Rivers, Islands
&
Coastal Areas

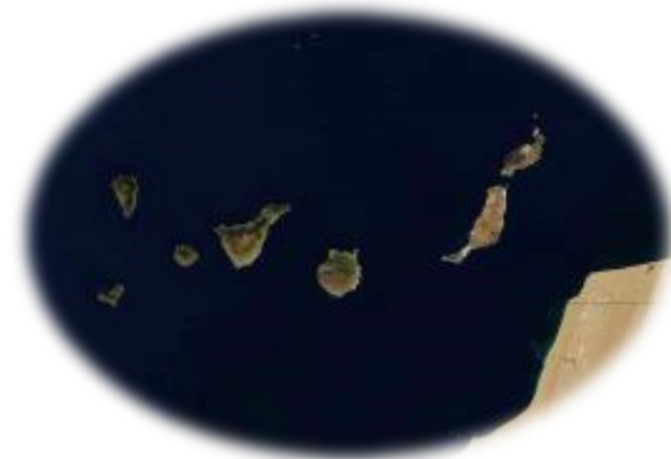
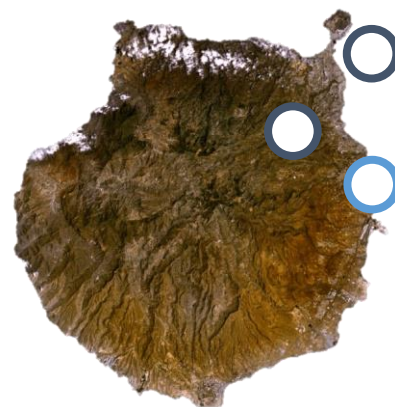
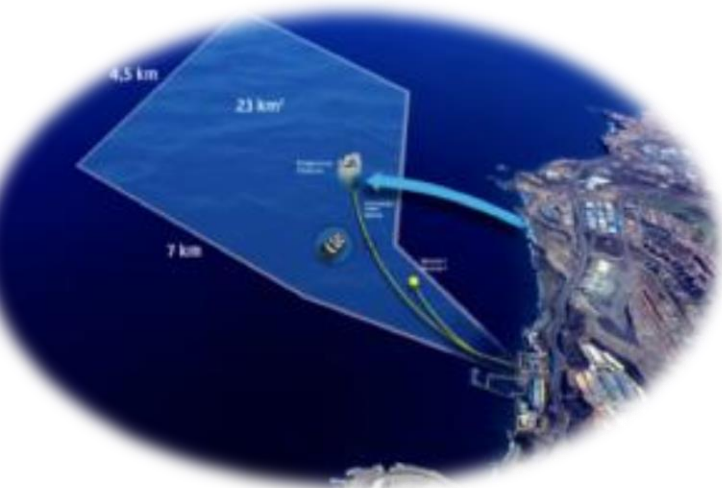


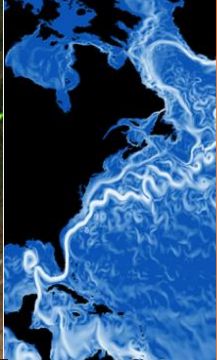
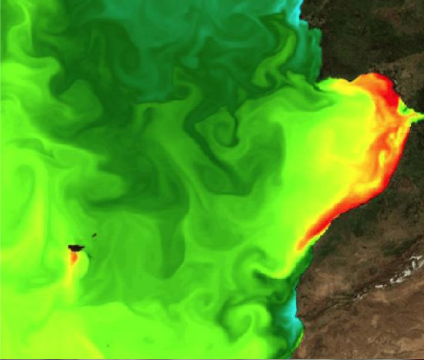
*Managing ships effluents within the Green Deal
Learning from Blue Ports Project*



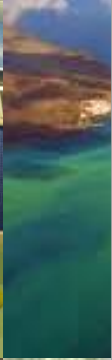
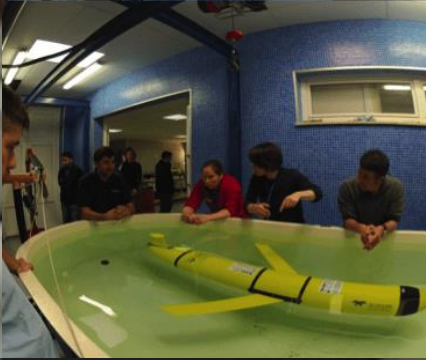


Tecnologías, Gestión
y Biogeoquímica Ambiental
Universidad de Las Palmas de Gran Canaria





Meteo-
Oceanographic Models:
Observation
& Prediction.



Ocean
Literacy.
Transnational
& Transboundary
Cooperation.



Monitoring
Water
Quality &
Pollution
Prevention.



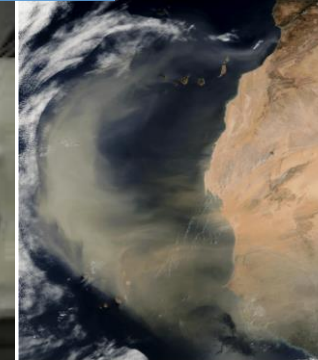
Environmental
Management
& EU
Directives
Implementation



Ship & Port
Activities
Sustainability



Aerosol
determinations.
Impacts on
marine &
atmospheric
environment.



Good environmental practices in the Macaronesian Ports

EU Water Framework Directive Implementation (2000/60/EC)

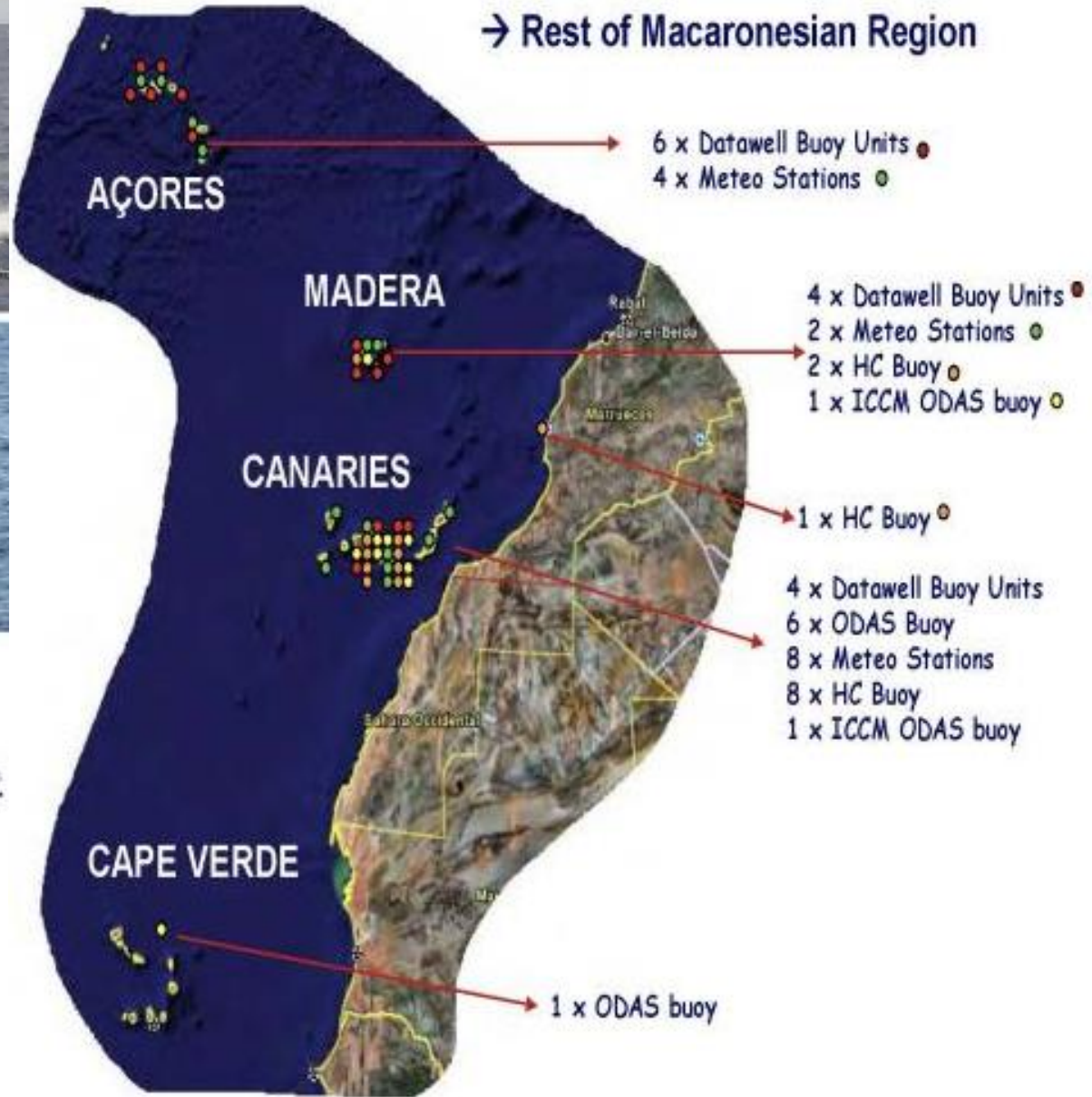


0106_PORTVERT_2_A (POCTEFEX,
<http://www.portvert.net>) 2011-2014

0074/SMARTPORT/3/A 2013-2015



RED ACOMAR- RED 3M



CLIMAAT, CLIMARCOST, MACSIMAR;
 ESTRAMAR (MAC/3/C17) 10/10/2011-31/10/2015
 ECOMARPORT (MAC/1.1b/081,
<http://www.ecomarport.eu/>)



Tecnológicas, Gestión
y Biogeoquímica Ambiental
Universidad de Las Palmas de Gran Canaria



Physico-chemical information resulting from port water quality assessments in Las Palmas Port

Water: Temperature, Salinity, Oxygen, Chl a, , turbidity, pH
Cadmium, Copper, Chromium, Mercury, Nickel, Lead,
Arsenic and Zinc
(8) Polycyclic aromatic hydrocarbons (PAH), Total hydrocarbons

Sediments:

Total organic carbon, Kjeldahl total nitrogen and total phosphorus.

(8) PAHs,

(7) PCBs;

Metals (Cadmium, Arsenic...)

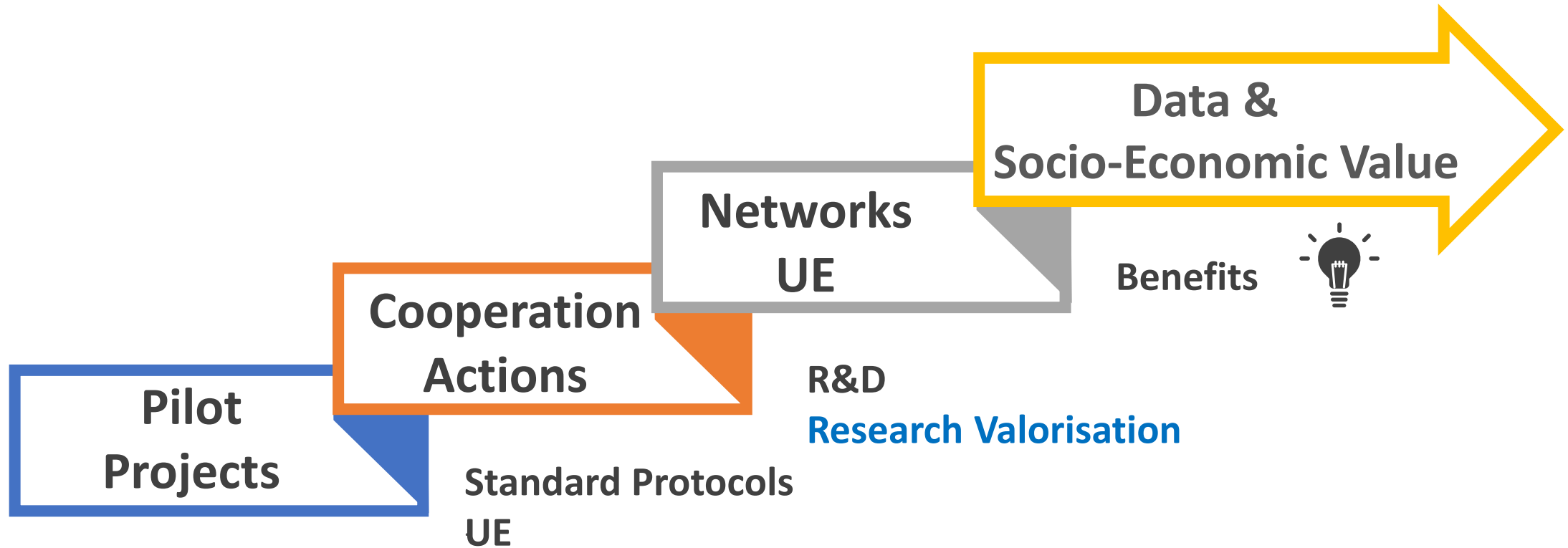


Puertos de Las Palmas

Autoridad Portuaria de Las Palmas

“CONTROL OF WATER QUALITY THROUGH A SYSTEMATIC SURVEILLANCE PLAN IN THE PORT OF LAS PALMAS AND THE HARBOR OF ARINAGA (ISLAND OF GRAN CANARIA) IN APPLICATION OF ROM 5.1-13 AND THE ENVIRONMENTAL IMPACT DECLARATIONS OF THE EXPANSION PROJECTS”

Conclusions



Good Monitoring
Transfer of the new
technology



J. Joaquín H. Brito

joaquin.brito@plocan.eu



María D. Gelado

maria.gelado@ulpgc.es

