

Blue Ports presentation

Content



01 Overview

02 Actions

03 State of the situation



Rationale & Goals



➔ Status 1: Discharge of ships effluents at sea is still a reality

➔ Status 2 : Ship owners claim for better port services (cost efficiency, products treated, harmonisation, etc)



GOAL 1: IMPROVE PORT RECEPTION and TREATMENT SERVICES

GOAL 2: REDUCE DISCHARGE OF SHIP EFFLUENTS AT SEA

Definition of the project



- Use the Atlantic area as a **cooperation** and **test** platform
- Assemble all concerned parties:
 - port/public authorities, PRF operators, technology & science providers
- Consider:
 - historical effluents (oily water) and new (scrubbers' waste & ballast water)
 - all aspects: technologies, environment, economy and regulation
- Combine **studies** and **tests** of technologies and processes
- Link the project to other related actions in Europe



Partnership

Madeira
Port authority
Research center (associated)

Acores
Port authority (3 ports)
(associated)

Gran Canarias
Las Palmas University
Las Palmas Port Authority
Clusters

Porto
Port Authority (associated)
Cluster Forum Oceano (associated)

Lisbon area
Bentley (Portuguese coordinator)
Eco-Oil (PRF operator)
Lisbon, Setubal, SINES Port Authorities (associated)
DGPM & DGRM (associated)

Cork
Port of Cork
Cluster (associated)
IMARE (associated)

Liverpool
University LJMU
Maritime cluster and ports (associated)

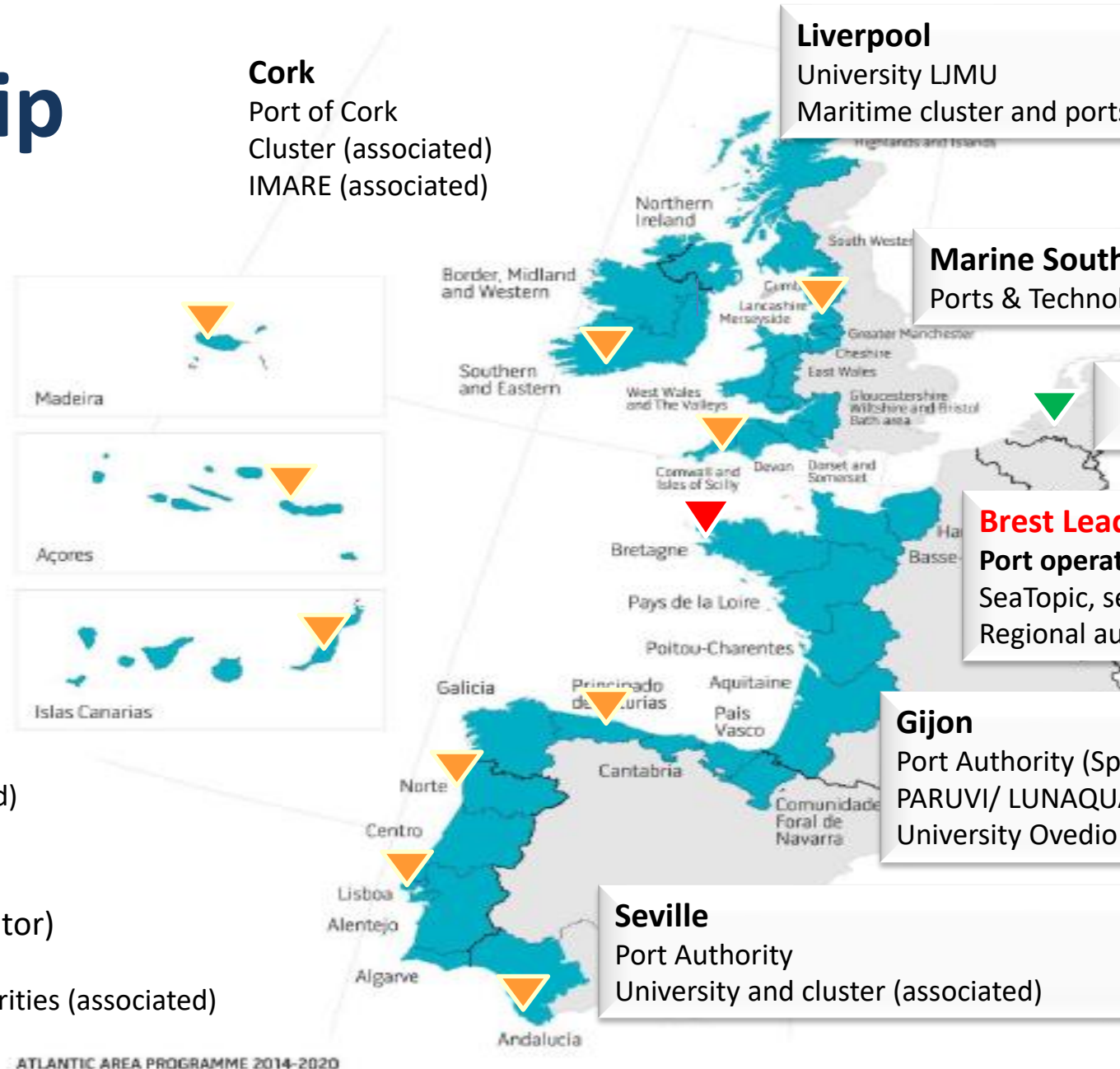
Marine South East (cluster)
Ports & Technology Providers (associated)

Damen Green NL (Gorinchem)

Brest Lead Partner
Port operator (CCI West Brittany)
SeaTopic, sea water monitoring
Regional authority, Shom, clusters (associated)

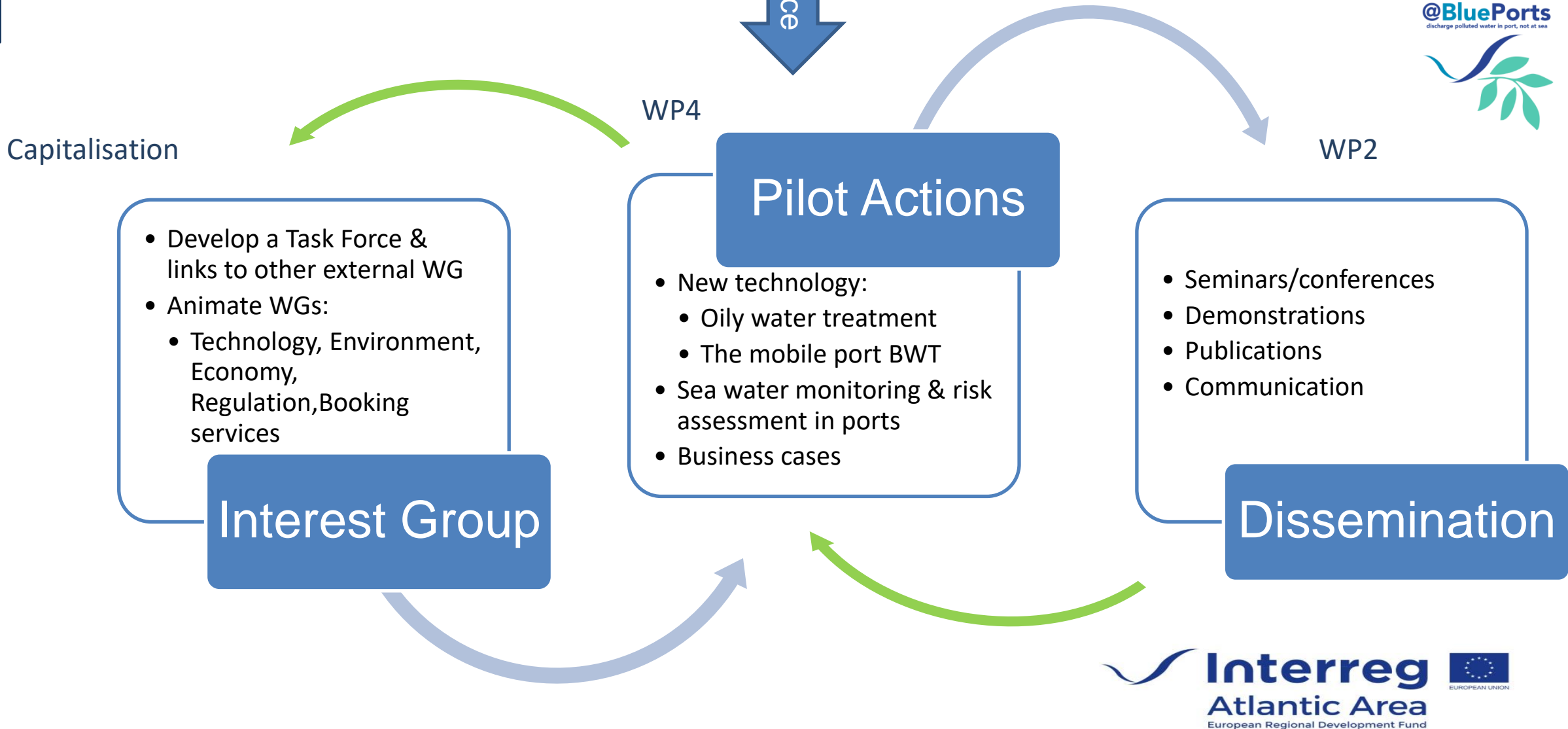
Gijon
Port Authority (Spanish coordinator)
PARUVI/ LUNAQUA, PRF operator
University Ovedio (associated)

Seville
Port Authority
University and cluster (associated)

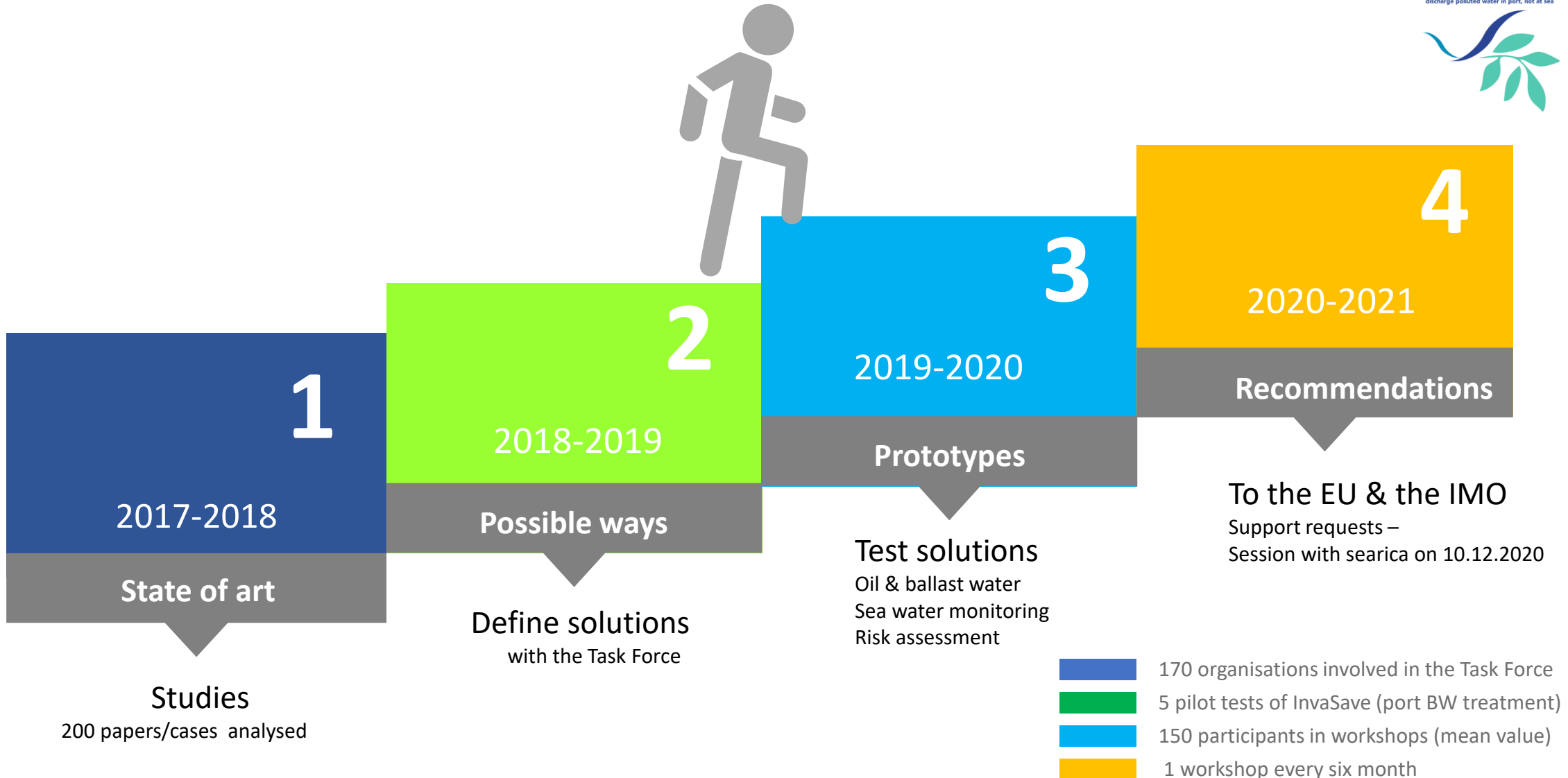


ATLANTIC AREA PROGRAMME 2014-2020

Activities



Progress



Blue Ports



State of the situation
Ways forward

State of the situation

2 pillars

Ballast Water Management Convention:

- * International
- * Vessels are directly addressed, ports indirectly

Port Reception Facility Directive : EU

- * European
- * Ports and vessels are directly addressed

@BluePorts
discharge polluted water in port, not at sea



Sea Water monitoring in ports

- * Detecting pollution (including aliens)
- * New and more pollution risks (eg scrubbers)

Waste collection and treatment

- * Avoiding discharge at sea (toxic/polluted water)
- * New and more toxic effluents & waste

2 actions

The discussion is open to the floor



Pierre Karleskind with the vice presidents & general manager of the CCI West Brittany

Contact: meriadec.lemouillour@ccimbo.bzh