

How can management & sector policies support - and benefit from - co-created ocean knowledge and Ocean Literacy?

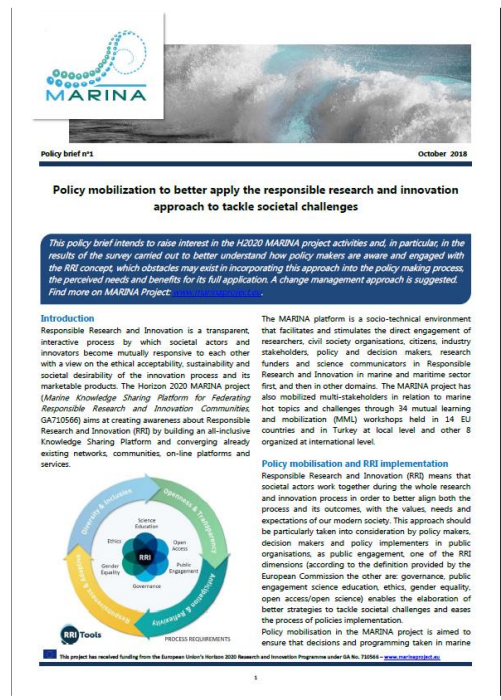
Food for thoughts

March 20, 2019

On behalf of the MARINA & ResponSEABLE projects, with contributions from participants at the 2019 Ocean Dialogues

Message 1 - Enhance policies to sustain knowledge co-creation and the role of this wider knowledge-base in ocean management

BOX 2- COMMENTS FROM INTERVIEWS: Expected benefits from CMA.
“I expect a public administration closer to citizens, a research useful for society and able to involve it at large”



A survey with more than 100 marine EU policy makers and research institutions showed us that concepts like engagement are known, but still many barriers exists to make it operational in relation to knowledge co-production

Message 2 - Develop **new skills** with more attention to **human sciences** (in particular sociology, psychology, media, marketing, economics, law, social processes...)

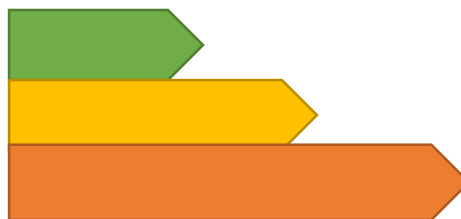
Capture « what drives » people and the connections between knowledge, perception, attitude and behaviour.

- Blue skills not to be only technical & natural science oriented
- Ensure transdisciplinarity is reality
- Deliver sound «no one fits all» solution



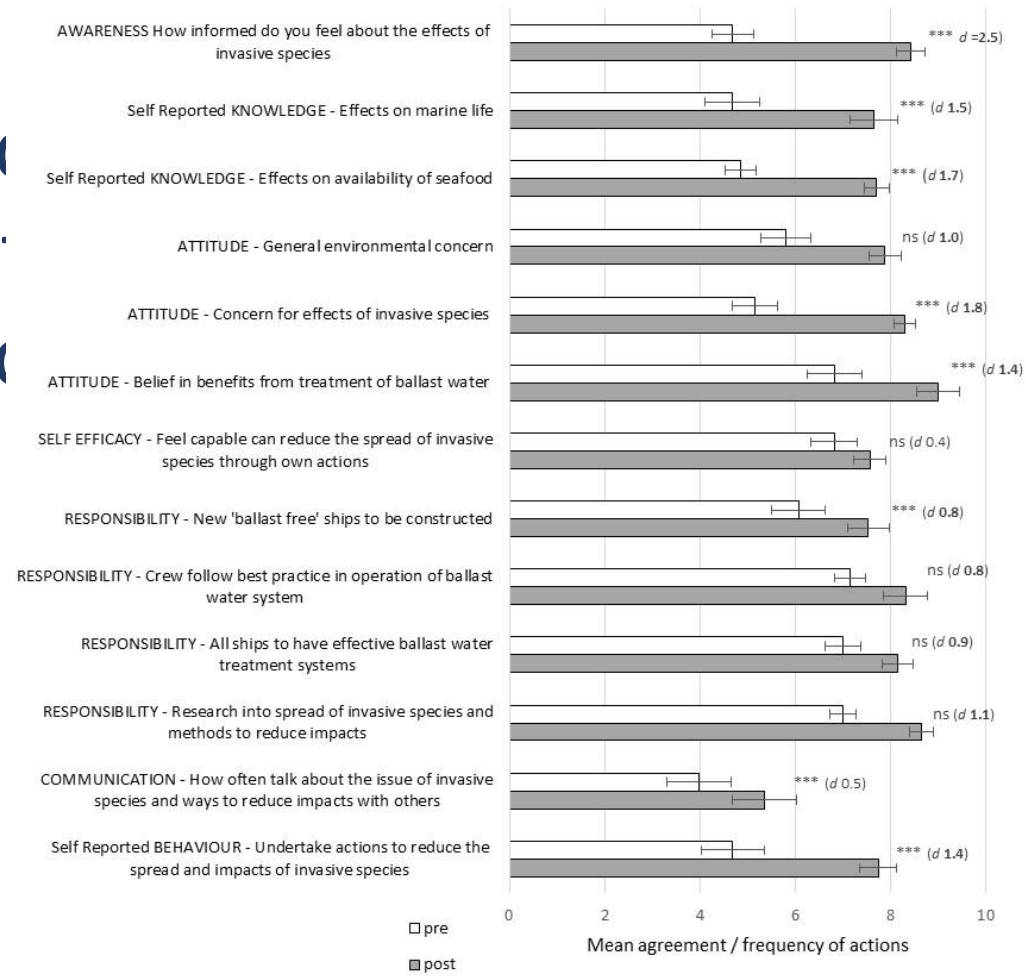
Message 3 - Strengthen **accountability & credibility** of **engagement processes** (both research and policy)

Certification of stakeholder engagement (living-lab, stakeholder mobilization) as driver to change ?



Message 5 - Make requirement to more experience. Allocation financial, time...) to

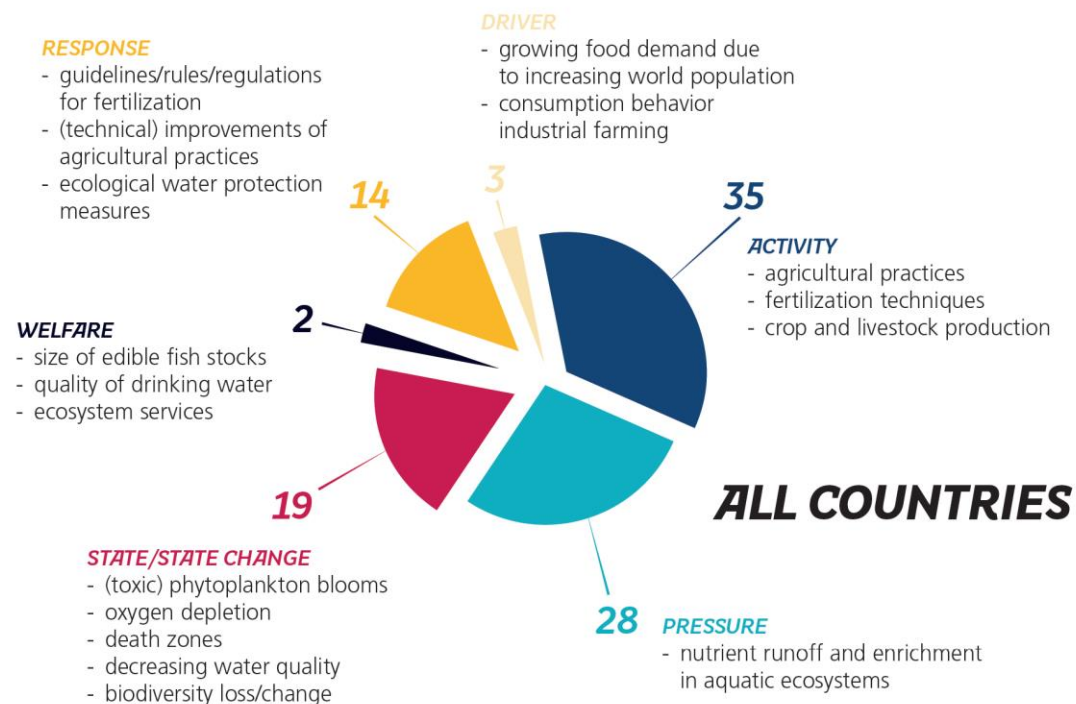
evaluation a
rom
nan,



Message 6 _ Support **forward looking exercises** (vision building) at different scales and for different sea basins for shedding lights on emerging ocean challenges and sectors in a context of global change –thus anticipating **future needs** for, and roles of, the ocean knowledge system

From the Ocean Dialogues

Message 7 - Ensure ocean literacy initiatives are targeted and provide the “right narrative”



Source: ResponSEable