



EFFECTS OF TOURIST PRESSURE ON WASTE MANAGEMENT

Sandra Espeja

Consellera de Medi Ambient

Environment Department – Consell de Mallorca



Consell de Mallorca

Brussels, 11 April, 2018

Interreg 
Mediterranean

 BLUEISLANDS

IMPACT OF HUMAN PRESSURE IN MALLORCA

- Waste generation

The generation of light packaging doubles in tourist season. From 1,000 tons in January to 2,000 tons in August.

- Incineration with energy recovery

During January 2017, 35,205 tons of waste were incinerated, while in August the figure rised to 56,840 tons.

- Increasing sewage sludge.

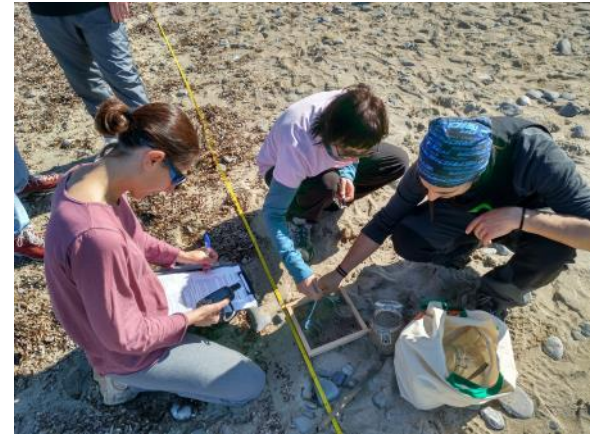


Interreg 
Mediterranean

 **BLUEISLANDS**

BLUEISLANDS PROJECT - MALLORCA

- Selection of beaches: Es Caragol (frequented by locals), Sa Canova (remoted) and Torà (highly frequented by tourists).
- Torà is located in Calvià, the most tourist municipality in Mallorca. In August 2017, a total of 5,5 millions overnight stays were registered in Calvià.
- The results of the sampling collected on the beaches are very important to improve our waste management.



Interreg 
Mediterranean

 BLUEISLANDS

OUR MANAGEMENT SERVICES

- Encouraging circular economy.
- Deploying an organic matter collection system in the island.
- Improvements in the light packaging plant.
- Promotion of the 3R's (Reduce, Reuse, Recycle).
- Environmental Technologies Park.
- Methanization and composting plants.
- Other services.



Thank you for your attention

We hope that the results of
BLUEISLANDS project will be
useful to give us tools to fight
against the tourist pressure in our
island



Consell de Mallorca

Sandra Espeja
Environment Department
mediambient@conselldemallorca.net

