



How to monitor marine litter and tourism waste: results from BLUEISLANDS project

Michaël Grelaud

icta  Institut de Ciència
i Tecnologia Ambientals • UAB

UAB
Universitat Autònoma de Barcelona

Brussels, 11 April, 2018

Interreg 
Mediterranean EUROPEAN UNION

 **BLUEISLANDS**

BLUEISLANDS IN A NUTSHELL

→ 14 partners from 8 countries in a systematic effort to properly **identify**, **address** and **mitigate** the effects of the **seasonal variation of waste generation on MED islands**



→ Waste Characteristics Study (quantification and characterization of waste generated by hotels, restaurants, bars, etc., in selected impact areas). **2018**

→ Monitoring and reuse of wastewater discharges in coastal marine ecosystems. **2017**

→ Monitoring of marine litter in 24 beaches of 8 islands (micro- and macroplastics). **2017**

BLUEISLANDS Monitoring Marine Litter



Hypothesis: marine litter on beaches of Mediterranean islands is increasing seasonally due to the increase of visitors during the high touristic season.
→ **3 beaches** x **8 islands** (highly touristic – used by locals – remote)

Interreg
Mediterranean



 BLUEISLANDS

Monitoring Marine Litter **Touristic beach**



Monitoring Marine Litter Beach used by locals



Monitoring Marine Litter Remote beach



BLUEISLANDS Monitoring Marine Litter



Hypothesis: marine litter on beaches of Mediterranean islands is increasing seasonally due to the increase of visitors during the high touristic season.
→ **3 beaches x 8 islands** (highly touristic – used by locals – remote)



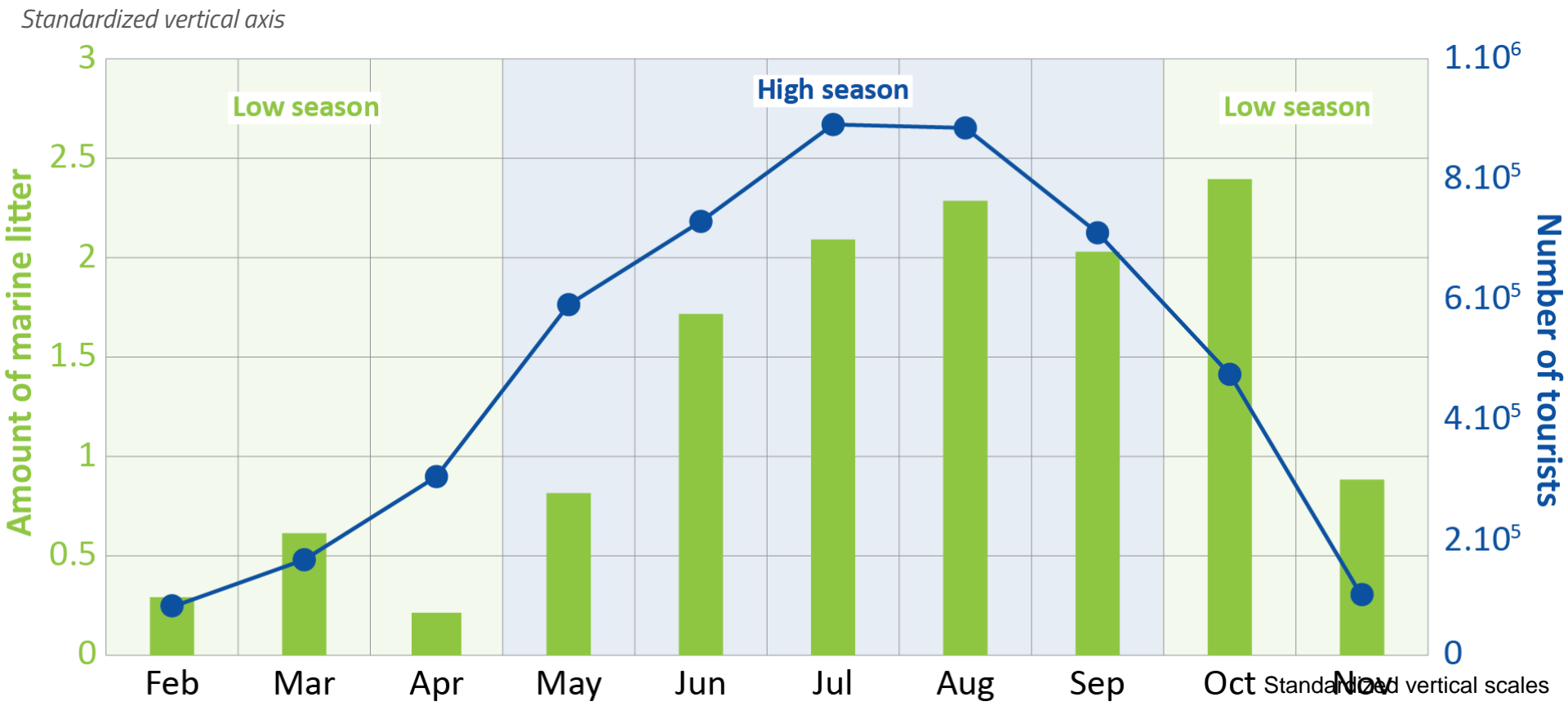
Method: fixed 100m portion of beach is periodically monitored during both low and high touristic seasons. *The OSPAR guideline for monitoring marine litter on beaches* was adapted to BLUEISLANDS needs (inclusion of the microplastics (<5mm))

BLUEISLANDS Monitoring Marine Litter – Overview

147 surveys on 100m of beach

24 beaches monitored from February 2017 to November 2017

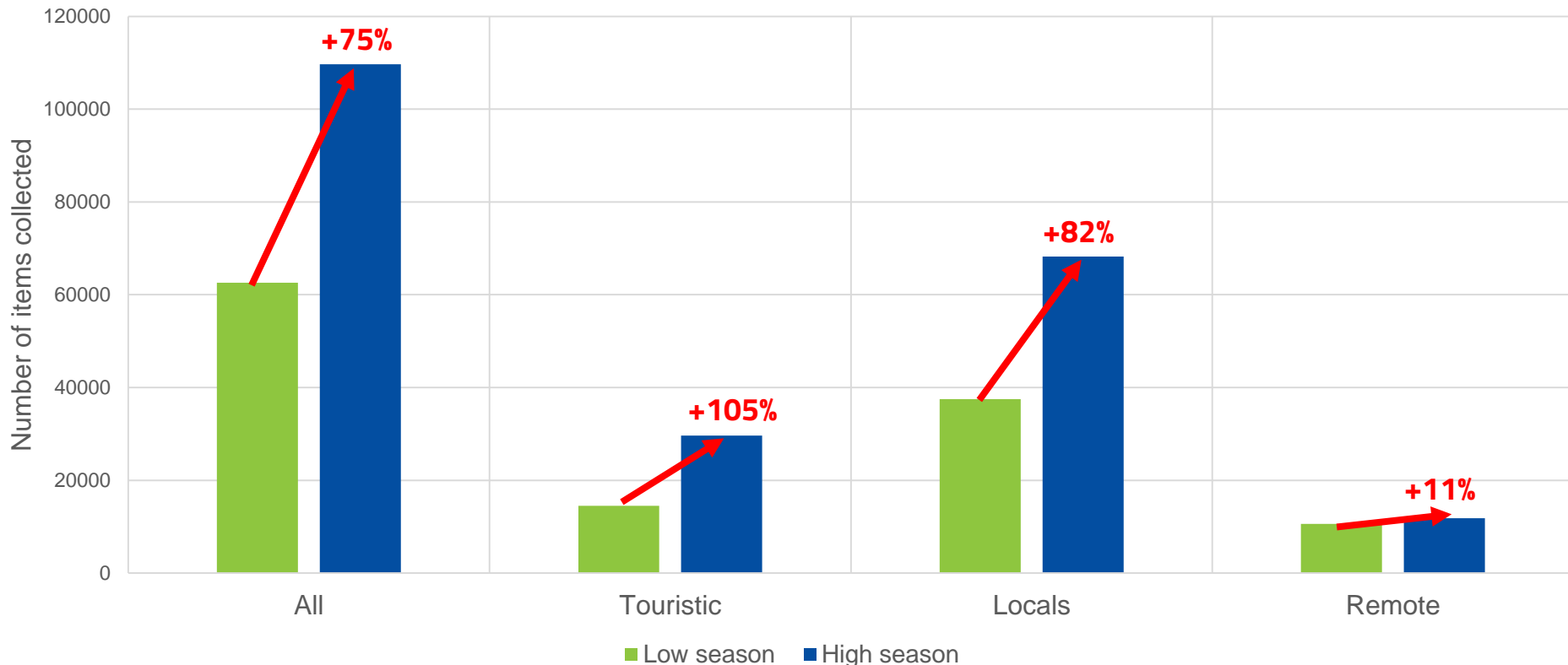
172 255 items collected (**64%** during high touristic season, **1200** items per survey)



BLUEISLANDS Monitoring Marine Litter – Overview

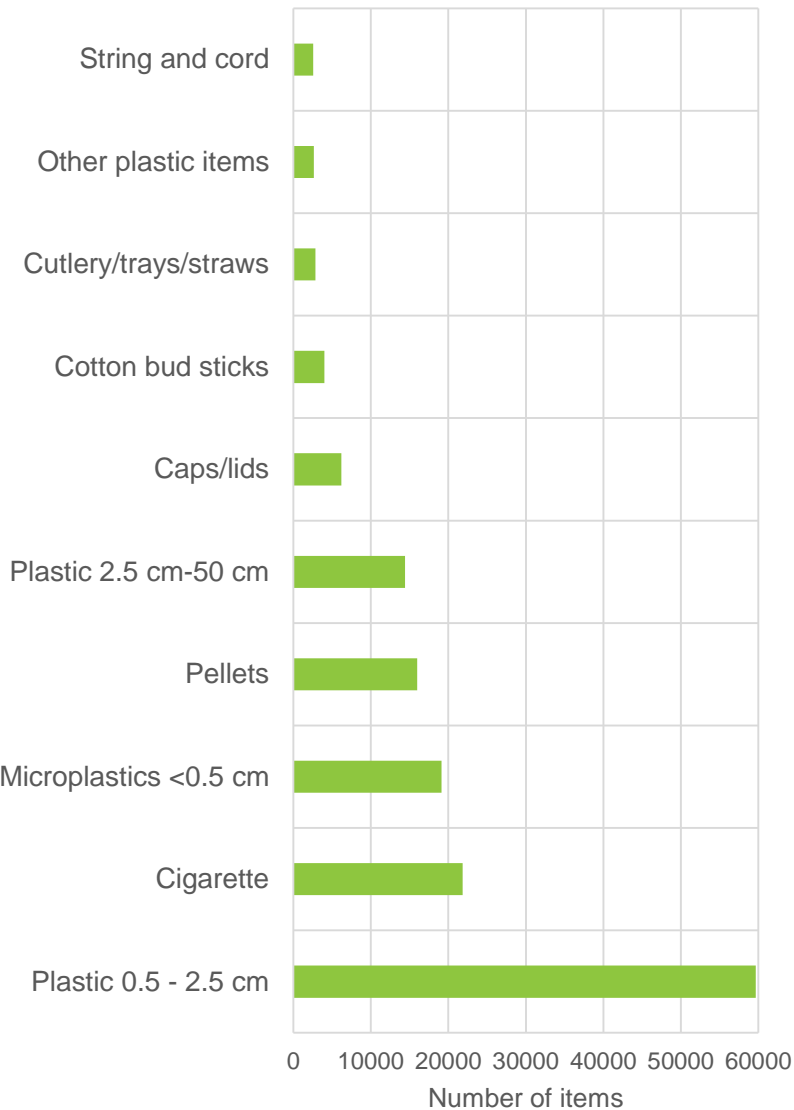
Average increase of **75%** in summer (**11%** - **105%** depending the type of beach)

Beaches used by locals more impacted (**61%** of the total), followed by the touristic beaches (**26%** of the total) and the remote beaches (**13%** of the total)



BLUEISLANDS Monitoring Marine Litter – Overview

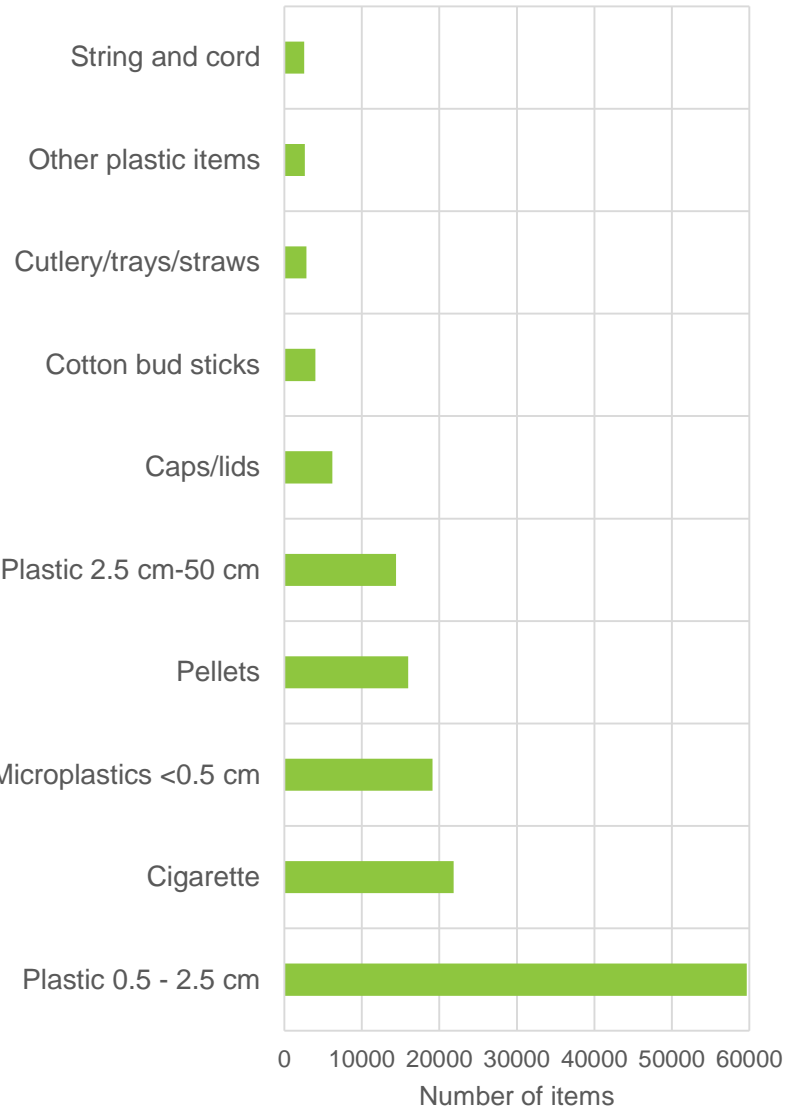
10 most abundant items



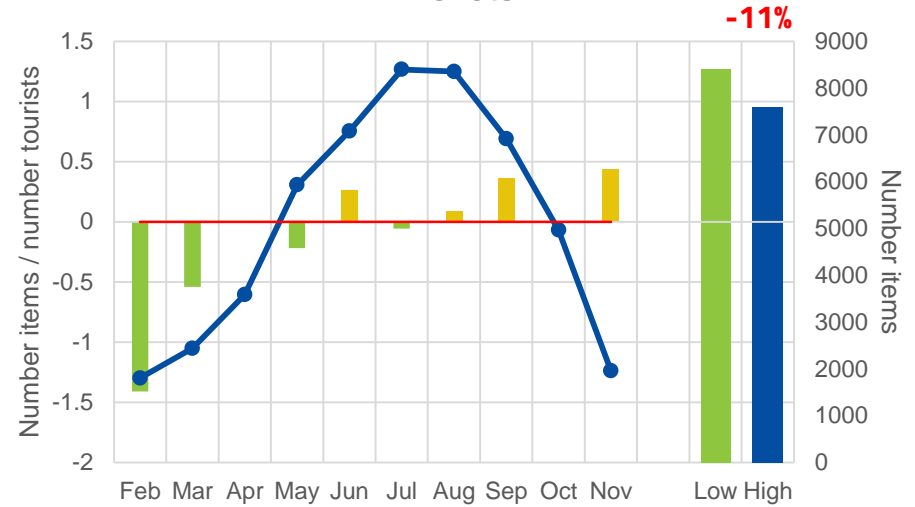
→ 87% of ML

BLUEISLANDS Monitoring Marine Litter – Overview

Total



Pellets

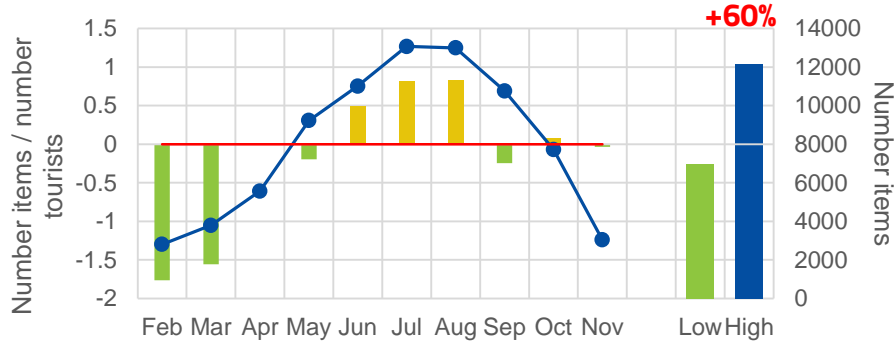


→ 9% of ML



BLUEISLANDS Monitoring Marine Litter – Overview

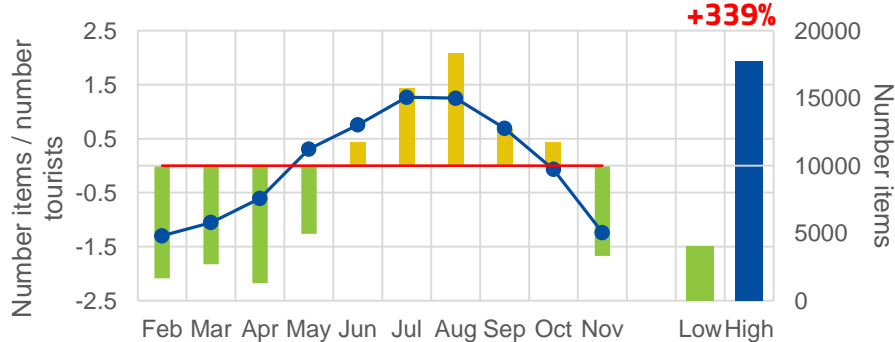
Microplastics (<0.5cm)



→ 11% of ML



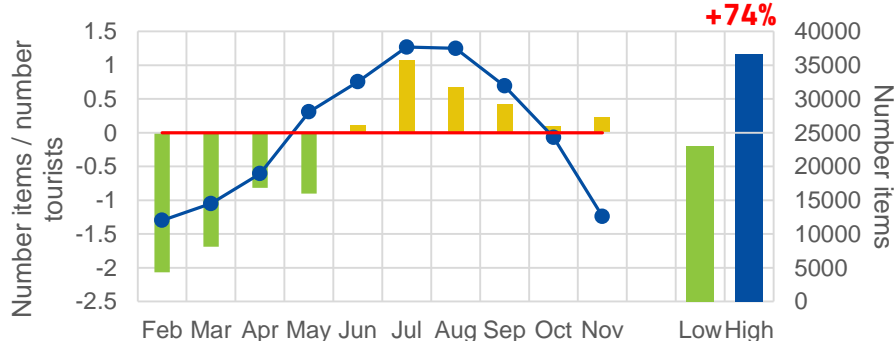
Gigarette filters



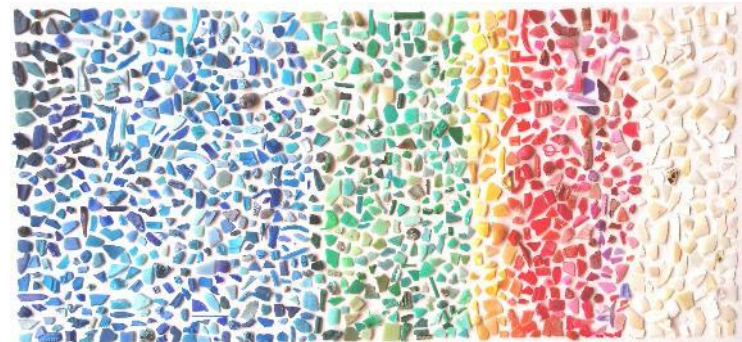
→ 13% of ML



Plastics (0.5 - 2.5cm)



→ 35% of ML



Take-home messages:

Increase of the marine litter during the high touristic season in the 3 different types of beach

Beaches used by locals are more affected

Pieces of plastic <2,5 cm and microplastics show a seasonal increase

Thanks



Michaël Grelaud

michael.grelaud@uab.cat

