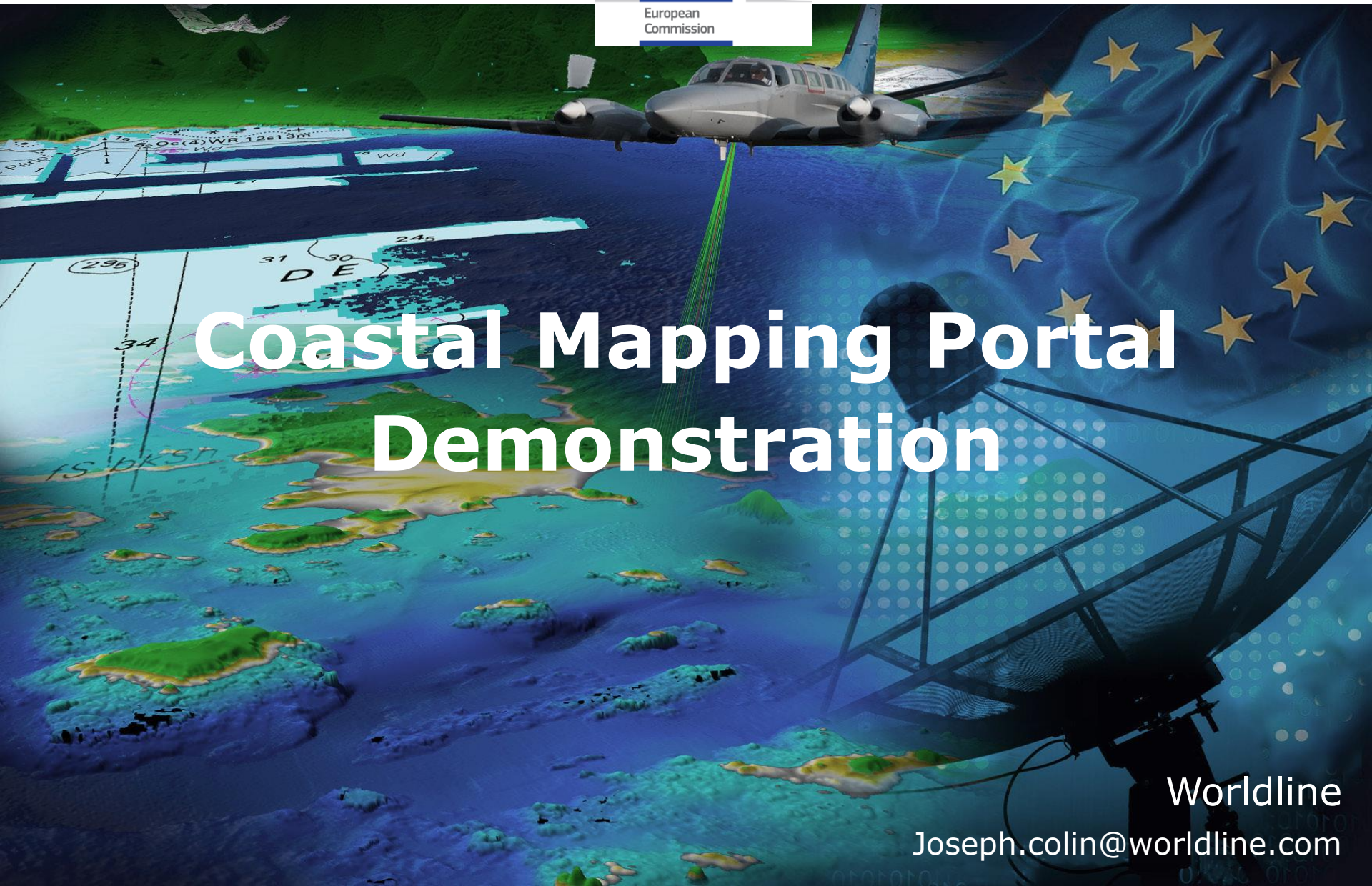




# Coastal Mapping Portal Demonstration



Worldline  
Joseph.colin@worldline.com

# Why a coastal mapping portal ?

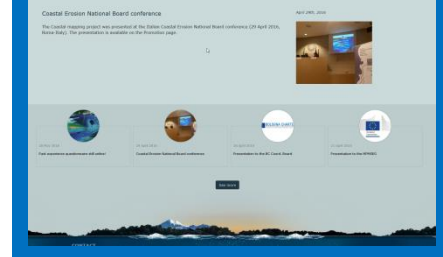
- **Centralize** available coastal data from partners, in a flexible way as browsable layers

## Coastal Mapping portal

### Geographic portal + catalog

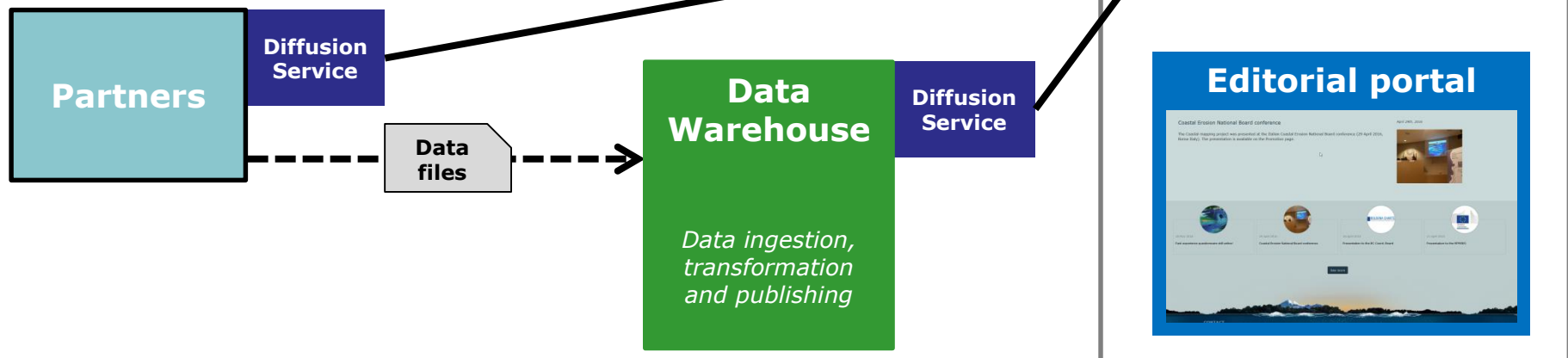


### Editorial portal



# Why a coastal mapping portal ?

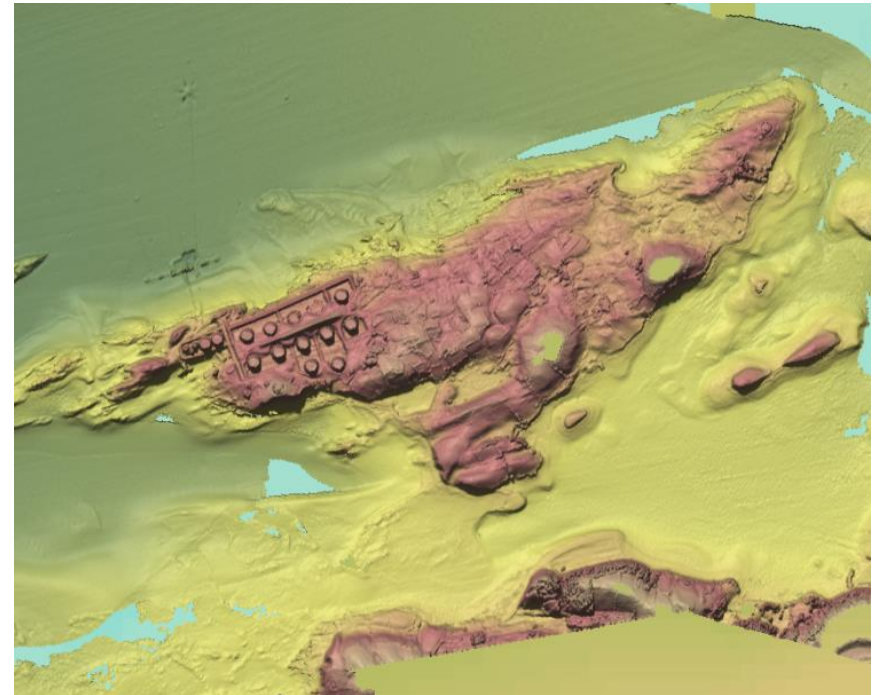
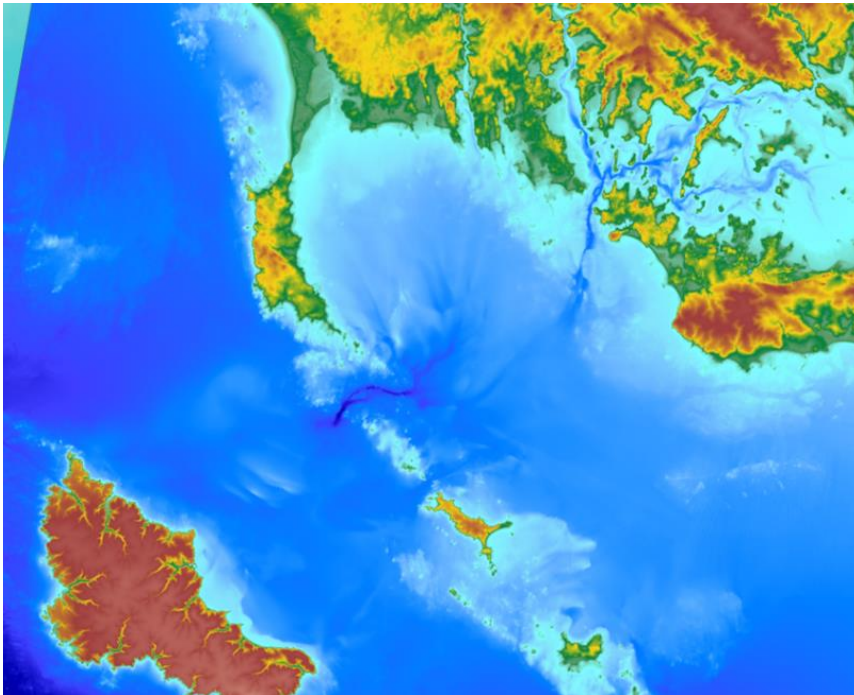
- **Centralize** available coastal data from partners, in a flexible way as browsable layers
  - from existing diffusion services
  - Make data visible, even from partners without an existing data portal
- Present the results of the coastal mapping project





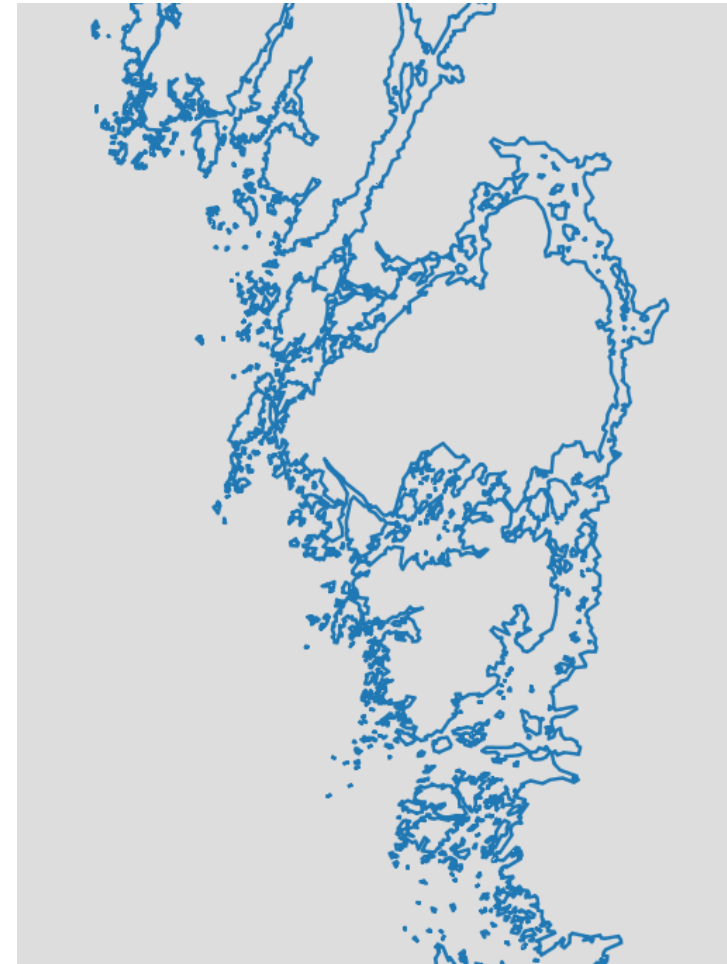
# What data are available ?

- Bathymetry & some topography



# What data are available ?

- Coastline – Baseline
  - EEA coastline
  - Legal baseline
  - Highest Astronomical Tide Level
  - Mean Sea Level
  - Intertidal Area

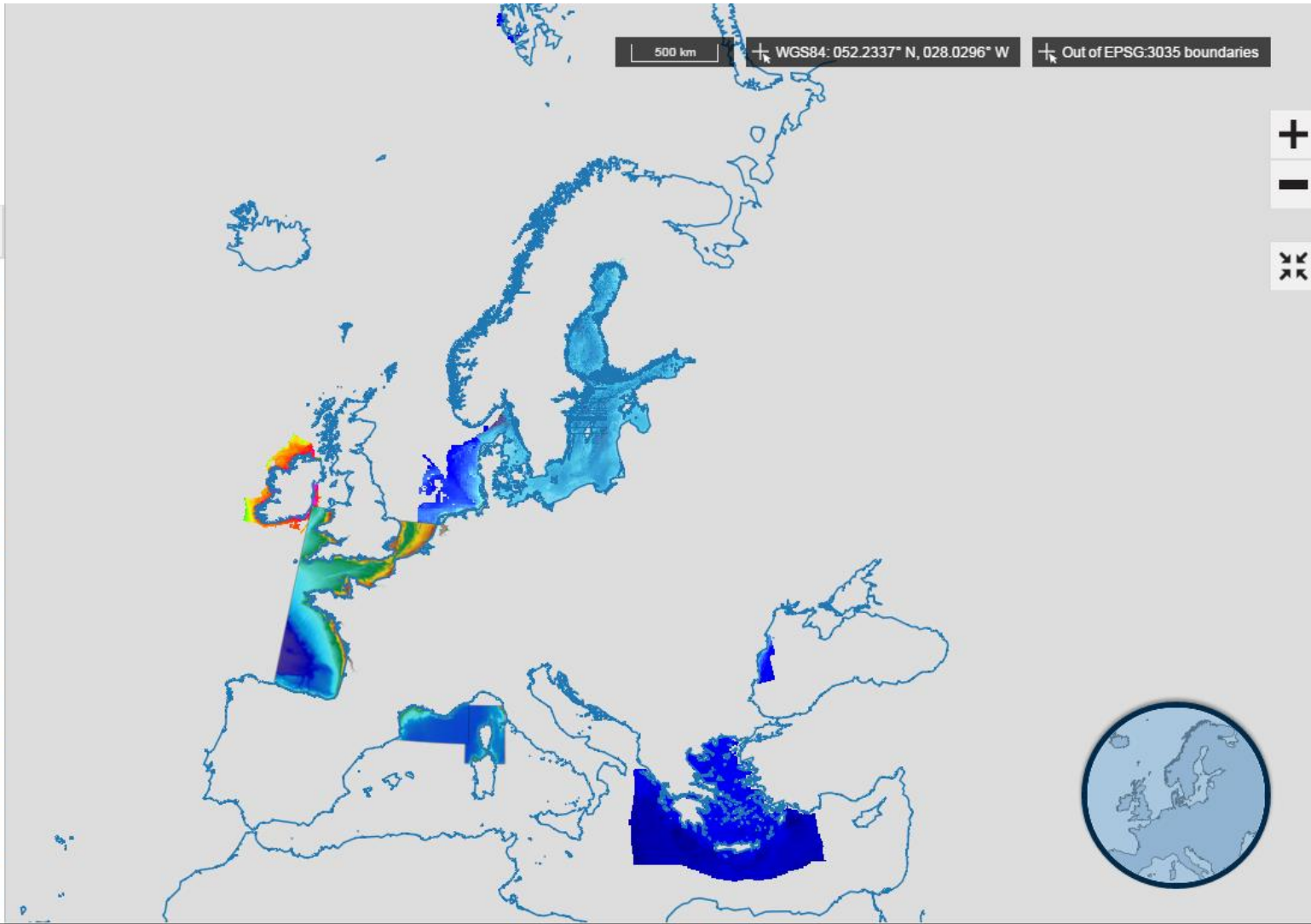


## Example of visualization : all coastal bathymetry data available from project partners

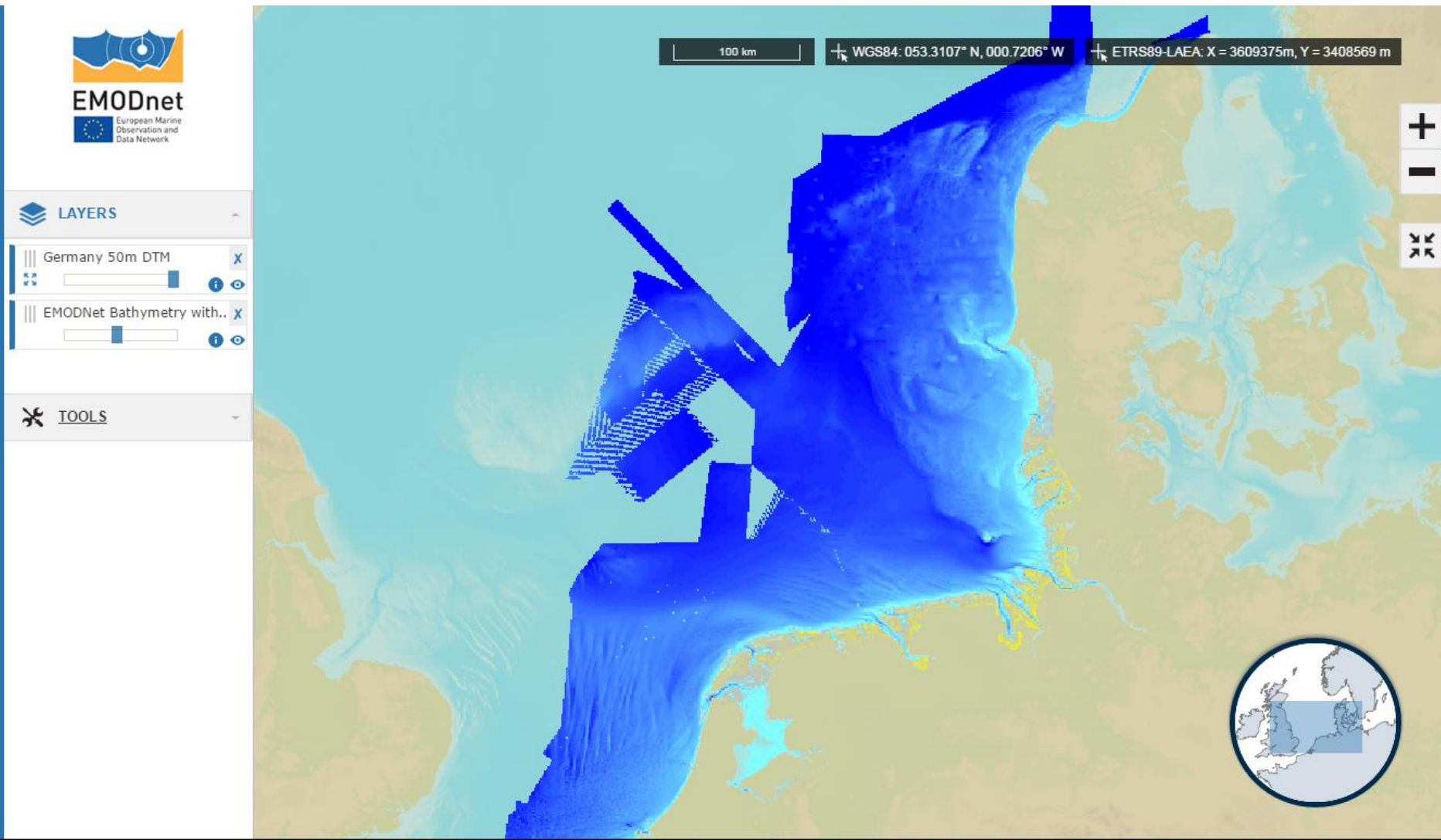


### LAYERS

- EEA Coastline X
- Norway 10m DTM X
- France 100m DTM Lion Gu... X
- France 100m DTM Corse X
- France 100m DTM Atlantic... X
- Baltic Sea 500m Bathymet.. X
- Romania 500m DTM 1970 X
- Netherlands 20m DTM X
- Ireland 30m DTM X
- Greece DTM X
- Germany 50m DTM X

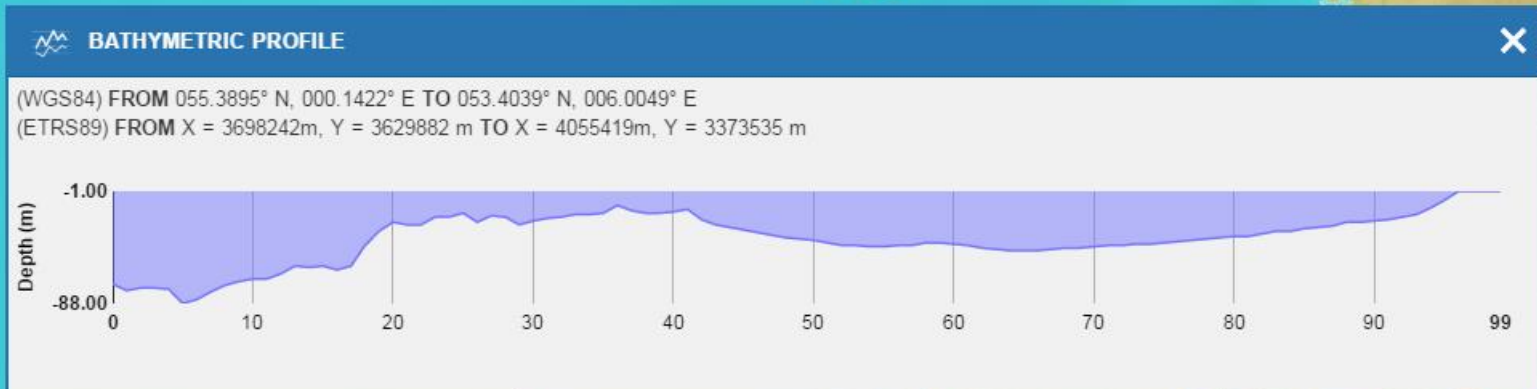


## Example of visualization : Bathymetry data at regional scale - Germany



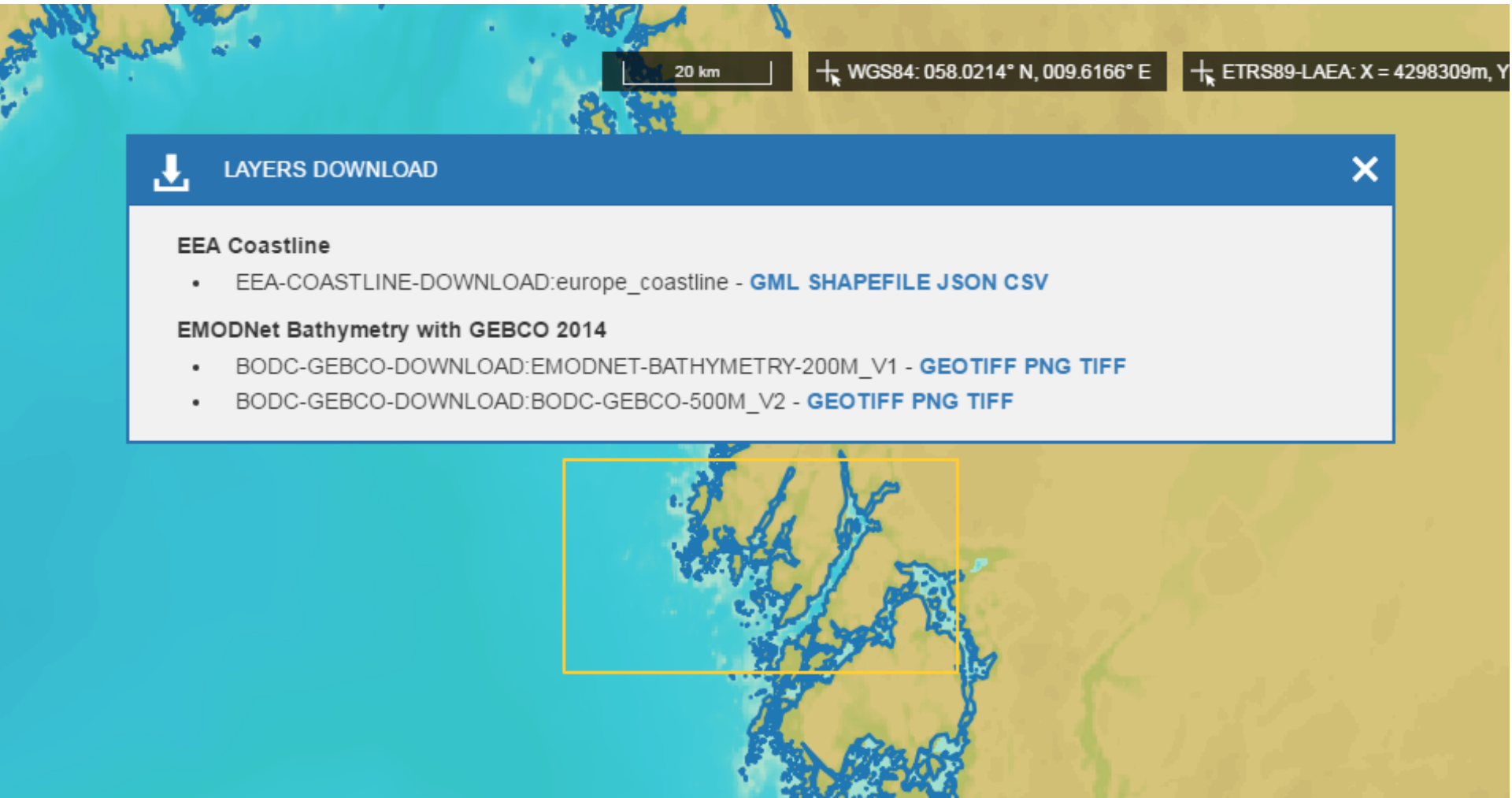


# Tools - bathymetric profile: for cables, pipes, coastal management





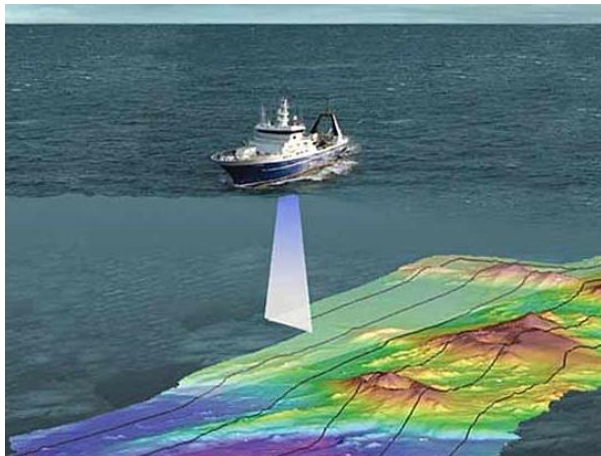
# Tools - download open data from a specific area



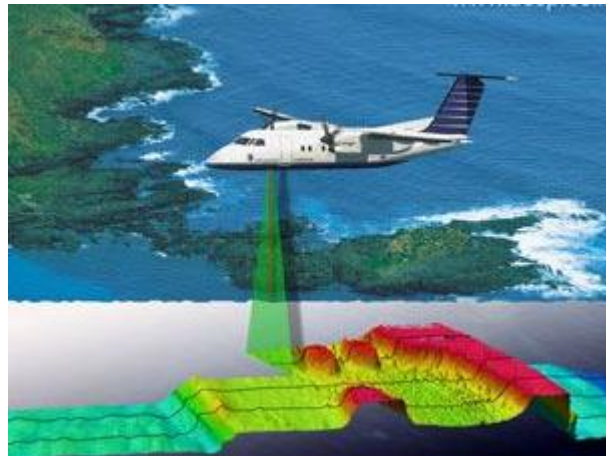
# Coastal Mapping Planner « CMP »

- A tool that helps in planning a survey campaign. Depending on the local conditions, CMP identifies appropriate technologies and where they can be used.
- Supported technologies :

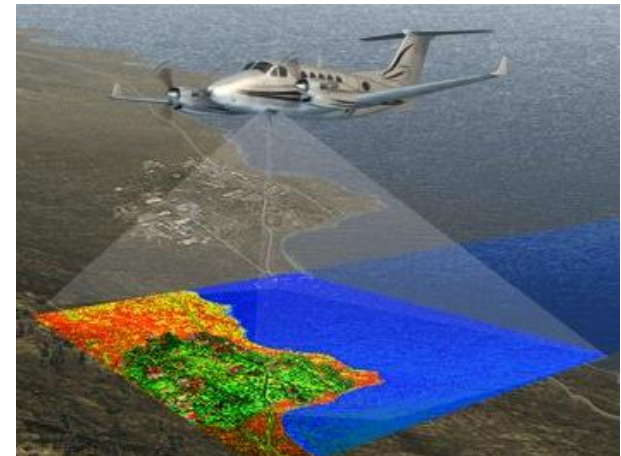
Multibeam echo sounder



LiDAR

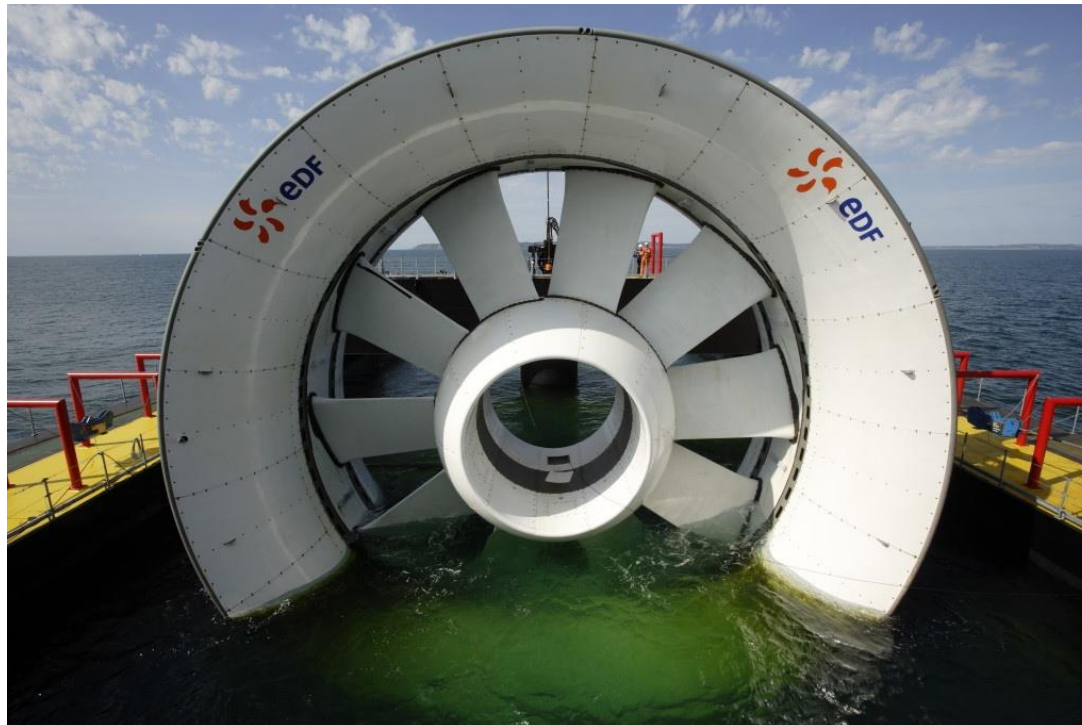


Airborne Hyperspectral



# Coastal Mapping Planner – ex. marine energy in Estuary of the Elbe

- Seafloor quality (soft / hard) is a key for installation of underwater power generators





# Ex. Estuary of the Elbe - Germany



LAYERS

- EEA Coastline
- CMP.Geo - Airborn Hypersp...
- CMP.Geo - Multibeam
- EMODNet Bathymetry wit...

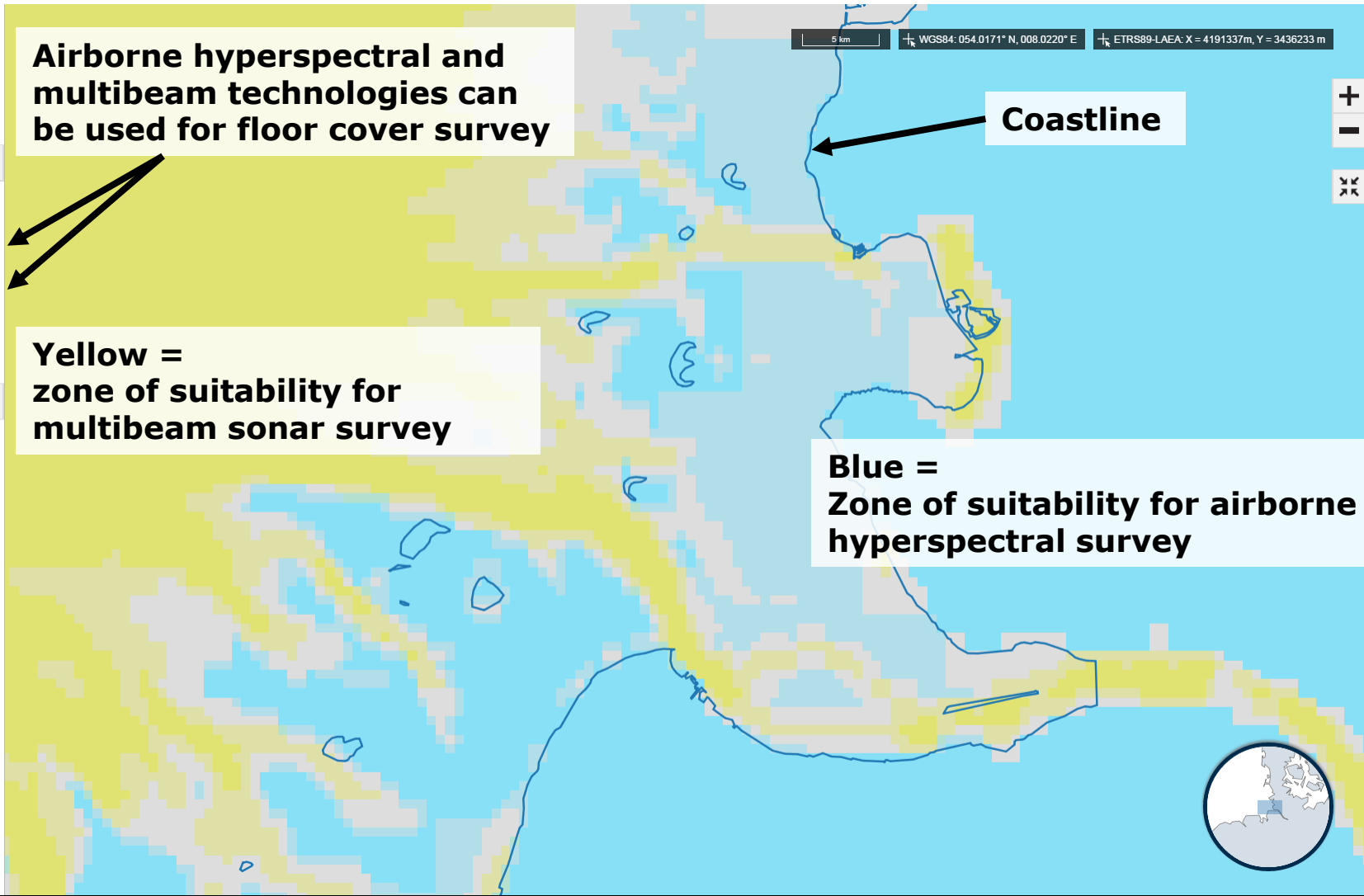
TOOLS

**Airborne hyperspectral and multibeam technologies can be used for floor cover survey**

**Yellow = zone of suitability for multibeam sonar survey**

**Blue = Zone of suitability for airborne hyperspectral survey**

**Coastline**



## **What possible future for the portal ?**

- Uses for transnational implementations of EU Directives : MSP, MFSD, WFD
- Design of basin or macro-regional strategies

**Everything depends on the quality and quantity of uploaded data**

**Need for a European strategy**